

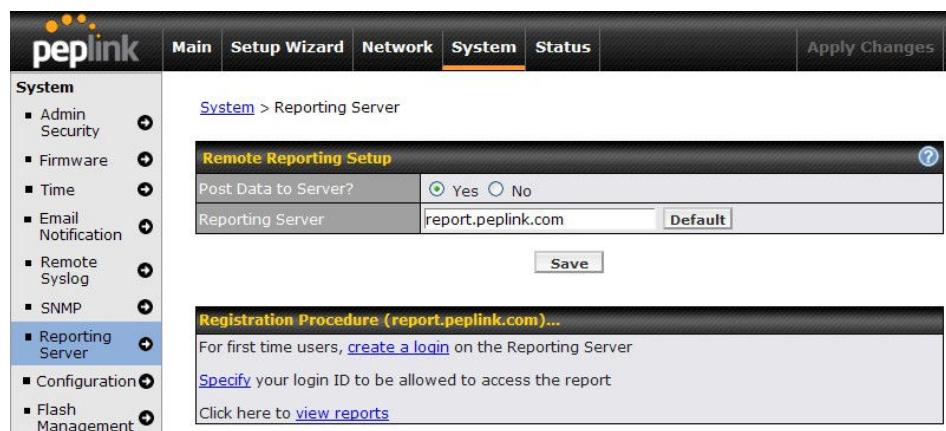
## How to Enable Reporting Service?

### Introduction

Peplink Reporting Service provides traffic statistics reports of your network performance drawn from live and historical data. It is a free (and optional) service to monitor the network(s) for all your Balance devices.

### Post Data

1. Open the Balance admin page and go to **System -> Reporting Server**.
2. To use the default Peplink reporting server, select **Yes** in the **Post Data to Server** field. Save and apply the changes.



### Register a Report Account

Before using reporting service, you need a valid user account on reporting server. As a new user, please follow the steps below to register:

1. Click on the **create a login** link on the Balance admin page or go to Peplink reporting server (<http://report.peplink.com>) to **Register Report Account**.



2. Enter your detailed user information on the **Account Registration** page.
3. An e-mail will be sent to your e-mail address and follow the instructions in your e-mail to activate your account.

## Update Balance Device(s)

1. On the Balance admin page, **specify** your **User Account** registered and click **Update**. It will associate this Balance with the specified user account on the server.
2. If you have more than one Balance device, you need to login to the admin page of each Balance device, and update your account on the Reporting Server Registration window.

### Reporting Server Registration

The form contains two input fields. The first is labeled 'User Account \*' and is empty. Below it is a note: 'Registration will contact the reporting server to associate this PePLink Balance with the specified user account on the server. Make sure you have a valid user account before this registration.' Below the note are two buttons: 'Update' and 'Cancel'. The second input field is labeled 'Reporting Server:' and contains the text 'report.peplink.com'.

## View Reports

1. Login to Peplink reporting server (<http://report.peplink.com>). Your management devices list will be displayed on the interface.  
*Note: No Balance device is seen when log in with a brand new account.*

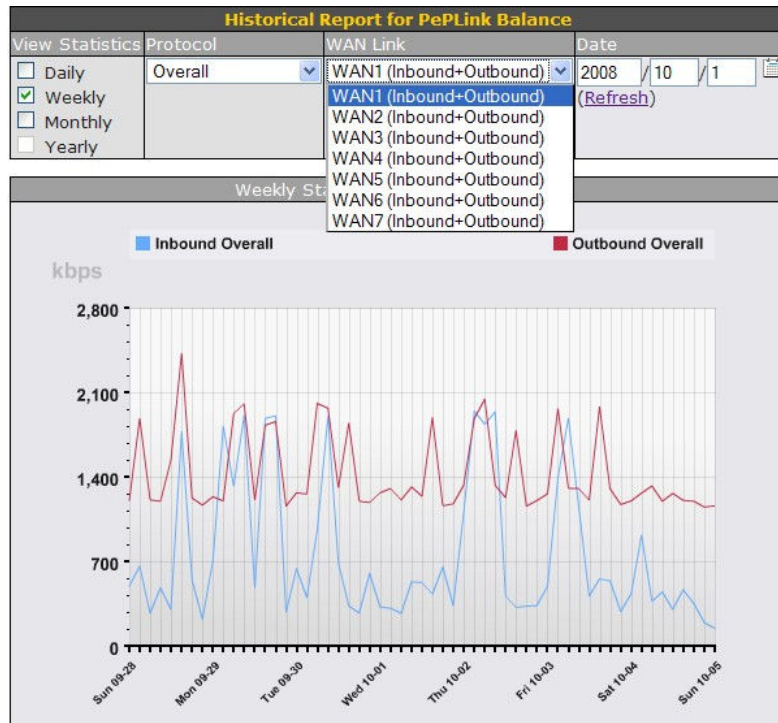
The interface shows the Peplink logo and 'Balance Reporting Server' text. In the top right corner, it says 'Logged in as user | Logout'. The main content area is titled 'PePLink Balance Reporting Server' and contains a table with the following data:

Your managed PePLink Devices					
Serial Number	Description	PePLink Product	Reports		Remove
1824-1A2B-3C4D	Office1	PePLink Balance 200	Live	Historical	[trash icon]
1824-1234-ABCD	Office2	PePLink Balance 700	Live	Historical	[trash icon]
1824-ABCD-1234	Office3	PePLink Balance 380	Live	Historical	[trash icon]

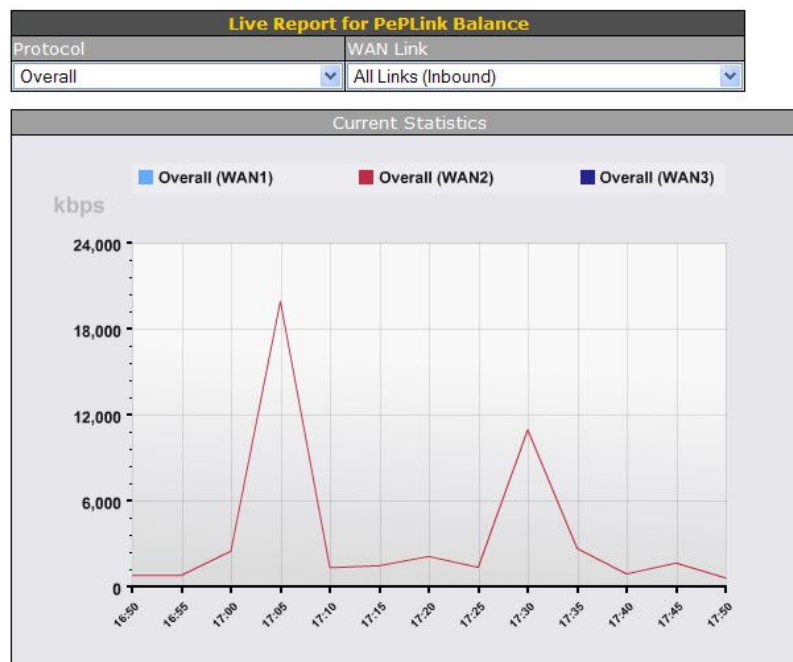
Below the table is a button labeled 'Change Device Description'.

2. To display individual device statistics, click **Statistics** next to the selected device. You can view **Live** and **Historical** traffic statistics for both inbound and outbound by WAN link and standard protocol.

The illustration below shows a historical weekly report of a Balance 710 device:



This illustration below shows a live report of current traffic statistics:



**Disclaimer:** This how-to document may not contain the most up-to-date information. Please refer to the User Manual for official product information.